

TOOTAL

FABRICS



Tootal goes Corporatewear

*Your local partner...*

# TOTAL

FABRICS



*There are many different sectors within the corporate market, of which all have different uniform requirements. Whether you manage a Bus or Airline Company, Train & Rail Services, Taxi firms, Courier Services or you just need the perfect fabric for your dress shirt at the office, Tootal Fabrics (Holland) B.V. can be your one stop source for all your fabrics for corporate shirts and blouses!*

*We improve and invest in developing innovative fabrics. We expand our collection on a daily basis with fabrics such as bamboo, Tencel, babycord, digital prints and many more. We take our social responsibility by investing in sustainable fabrics and processes.*

*This lookbook shows a variety of fabrics suitable for corporatewear.*

*Let us inspire you with a small selection of our latest designs and collections.*

*For more inspiration visit our website [www.tootal.nl](http://www.tootal.nl) or contact our sales representative.*

# By bus

# TOTAL FABRICS



1119.90001



*Cotton and polyester blends are durable fabrics. Even if it has a higher percentage of polyester. 80/20 cotton/polyester blends for example are very common because they have the softness and breathability of cotton and the desirable durability and flexibility of polyester. One of many examples is our Oxford shirt fabric with a composition of 70% cotton and 30% polyester. It is a comfortable fabric to wear and amongst others used by bus drivers.*



1119.00102



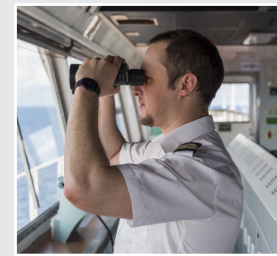
1119.25607



1119.25264

# By boat

# TOTAL FABRICS



5838.20001



Many of our clients are garment makers producing corporate uniform shirts and blouses to end-users in the Transport industry. Our blended cotton polyester elastane fabric article 5767 is a nice option. It has good stretch and recovery characteristics. It is comfortable to wear and you can wash it up to 60 degrees. Article 5838 is a good option too, because of the additional easycare finish.



5767.90001



5767.95073

Art.:  
5767

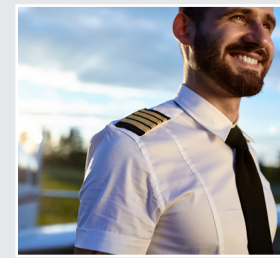
95073

95449



By air

# TOTAL FABRICS



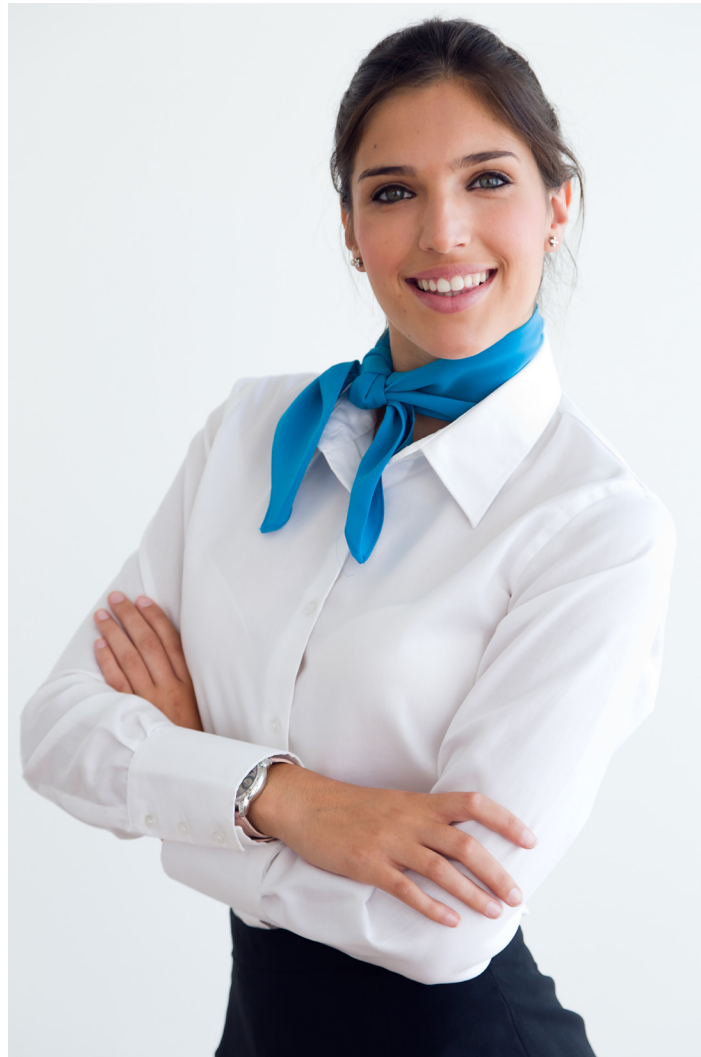
7251.90001



7251.85193



2672.25606



*It is not a surprise that crews of so many airlines worldwide are wearing shirts and blouses based on one of our fabrics. Some airlines choose a fine 100% cotton with an easycare finish such as article 2672 for their pilots.*

*While others prefer a blended fabric, for their cabin & ground staff, with a majority of cotton like article 7251. Just two types of fabrics which meet the specific customer's needs.*

**Art.:  
2672**

20001

25430

25286



# At school

# TOTAL FABRICS



7340.00317



Traditional school uniforms still exist in a lot of countries globally. A very important requirement is durability; tear and tensile strength and excellent colour fastness. Article 9065 with a composition of 65% polyester and 35% cotton with a soft handle meets those requirements. Many of these institutions choose a white or blue colour, it is not exceptional to see uniform shirts and blouses in colourful checks and stripes, for example article 7340.



9065.90001



9065.85398

# Police



0444.25629

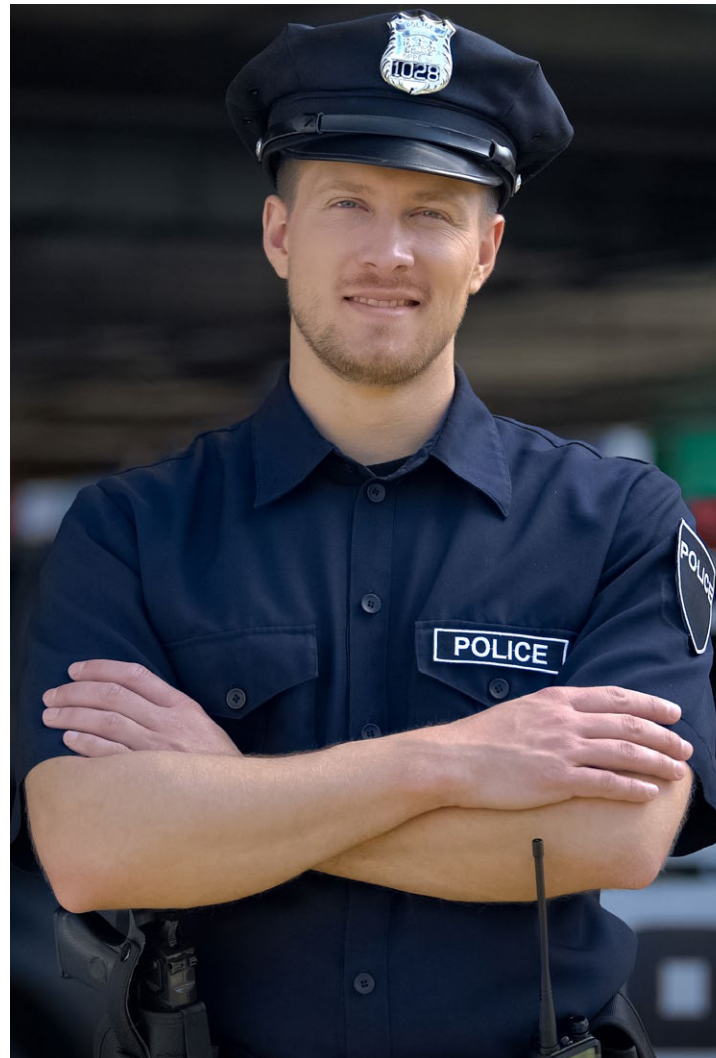
*Over the years Tootal Fabrics (Holland) B.V. has been the strategic partner for many garment makers who supply shirts and blouses to government institutions. Regardless if it concerns uniform shirts for staff members of air-force, navy, army or police, there is a wide selection of fabrics which will meet the requirements.*

**Art.:**  
**0444**

20070

25629

28170



3009.90001



1052.25263



# Security

# TOOTAL FABRICS



9037.85227

Security companies and departments with their employees are an important segment within the corporate industry.

The comprehensive collection of Tootal Fabrics (Holland) B.V. ensures that each customer will find a fabric that will meet their specific requirements. Three of the most appreciated cotton blended fabrics in this market are; article 7251, article 9439 and article 9037.

Art.:  
7251

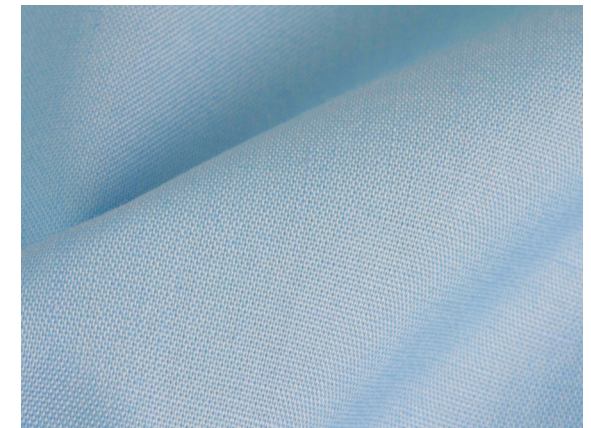


90001

85216



9439.00953



9037.85261

# Hospital

# TOOTAL FABRICS



9541.90001

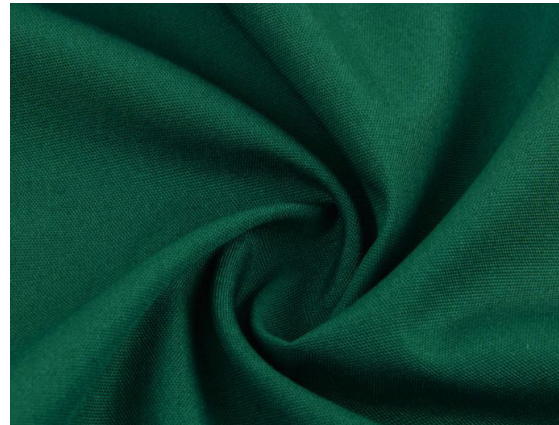
Tootal Fabrics (Holland) B.V. brings a range of quality fabrics to the healthcare market segment. One of these segments is hospitals. Besides light weight fabrics for uniform-shirts or blouses for hospital employees doing desk/office work, we also offer long lasting heavier weight workwear fabrics for medical staff. One of the items used for these professionals is our article 9541.



Art.:  
9541

90001

96829



9541.96844



9541.85406

# Healthcare

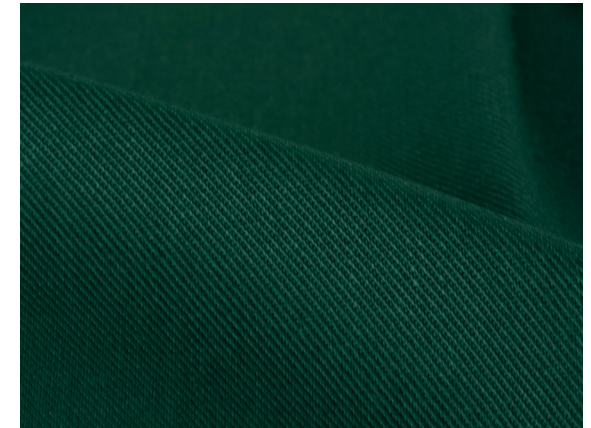
# TOTAL FABRICS



9511.90046

One of the evergreens used in the healthcare market is our workwear article 9511, which is a heavy weight twill fabric in a composition 65% polyester/35% cotton.

This fabric is available in a wide range of colours. Please ask for special finishing possibilities, like anti-bacterial against order.



9511.96447



9511.95365



Art.:  
9511

90046

98244

95365

# Civil face masks



The wearing of face masks during the COVID-19 pandemic has received varying recommendations from different public health agencies and governments. A fabric face mask is a mask made of a common textile and not certified for medical applications. Usually the composition is cotton but also blended fabrics are being used. The masks are worn over the nose and mouth.

Although they are less effective than medical-grade masks, many health authorities worldwide recommend that the general public use them. Tootal Fabrics (Holland) B.V. has a wide range of fabrics which are being used to produce so-called civil masks. Please ask for special finishing possibilities, like anti-bacterial against order.



# At the office



4940.20001

Whether men choose to wear a perfect white fitted shirt in combination with a suit and tie at the office or they prefer a smart casual outfit, Tootal Fabrics (Holland) B.V. has an extensive and fantastic range of fabrics in a big variety of designs, colours, compositions, yarn-counts and finishes. One of the many options; article 4940 (80% cotton/20% polyester) with a liquid ammonia easycare finish, our fil-à-fil article 7187 (60% cotton/40% polyester) or the classic blue stripe of article 1122 (80% cotton/20% polyester).



1122.00001



7187.00001

# Gastronomy



9515.90046

*Tootal Fabrics (Holland) B.V. brings several quality fabrics to the hospitality industry of which Gastronomy is a significant segment. We provide the basis for long lasting workwear for the professional chefs and kitchen staff. For these hard working men and women working in the very centre of the restaurant we offer our article 9515, which is a twill fabric.*



**Art.:  
9515**

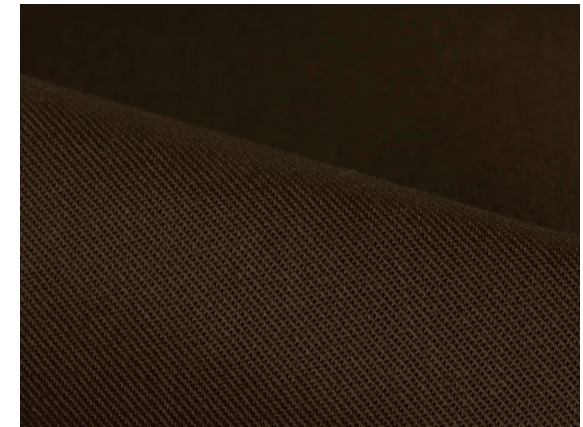
90046

98314

99014



9515.97440



9515.97369

# At your service



9515.97440

*Tootal Fabrics (Holland) B.V. provides what the hospitality industry requires; fabrics which ensure durable and comfortable uniforms for front office staff, waiters and housekeeping staff. Garments produced with quality fabrics contribute to maintain a consistent and professional image for your employees and company. One of the cotton blended items which is appreciated a lot is article 8336 and 1030.*



1030.28015

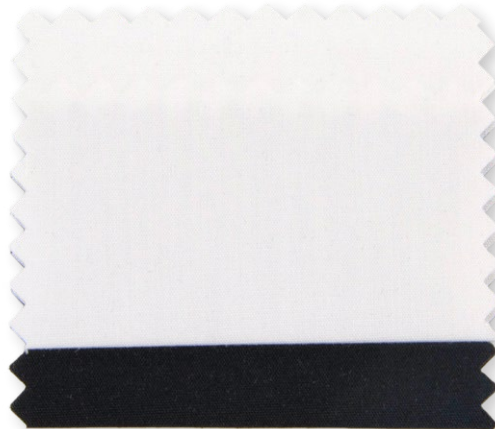


1030.27244

**Art.:  
8336**

90001

99015



# Sustainable fabrics



*Tootal Fabrics (Holland) B.V. offers a sustainable fabric collection, which we considered as a necessary step to contribute to a more sustainable approach in our industry and to the ecological awareness of the customers and consumers.*

*Reducing microfibers, which are polluting the world's oceans or using more materials with less environmental impact, sustainability is front and centre in the textile- and apparel industry.*

*We made first steps towards sustainability some years ago by ensuring that our entire fabric collection is Oeko-tex certified, covers Reach regulations and is therefore free of harmful chemicals. Eco-friendly fabrics like bamboo are also part of our collection.*

*Tootal Fabrics (Holland) B.V. is a GOTS-certified company. GOTS (Global Organic Textile Standard) is a certification that stands for ecology and social responsibility. This standard is your best assurance that the raw materials from which fabrics or yarns were made, really are organic and that strict rules concerning eco-friendly production have been followed along the whole production chain.*



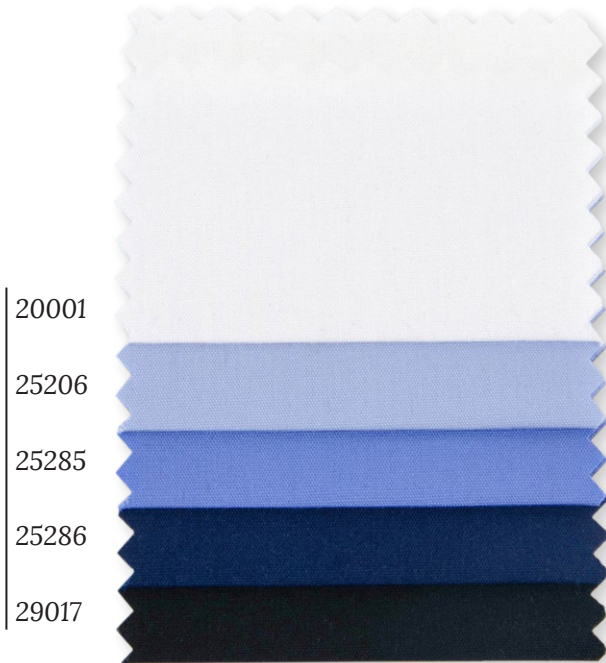


# Sustainable fabrics



An article can only be certified when the GOTS standard was followed in all previous steps in the production chain. The advantage of being a GOTS-certified company is, that this gives our customers the possibility of making GOTS certified garments themselves, provided of course that their companies are certified as well. Besides GOTS we are also certified by and therefore comply with the worldwide recognized standards such as: Organic Cotton Standard (OCS) & Global Recycled Standard (GRS). We are also member of the Better Cotton Initiative (BCI). Please ask our sales representatives for more information or request a sustainable catalogue.

Art.:  
1021.70



Art.:  
5767.73



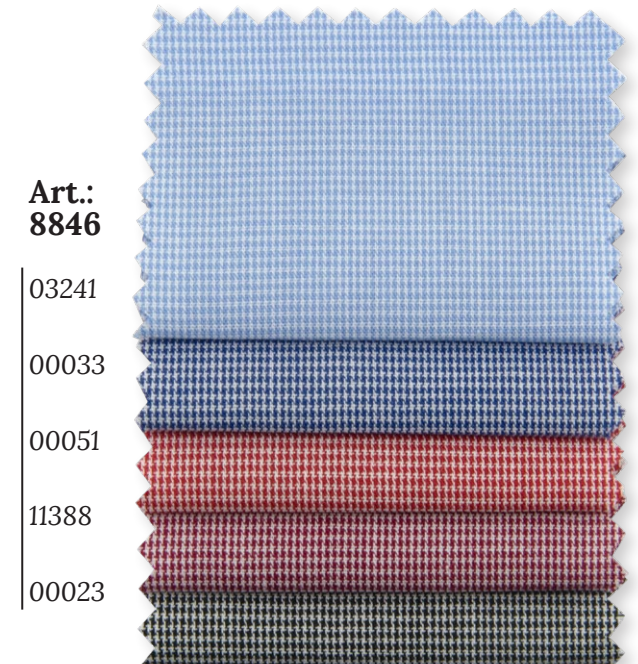
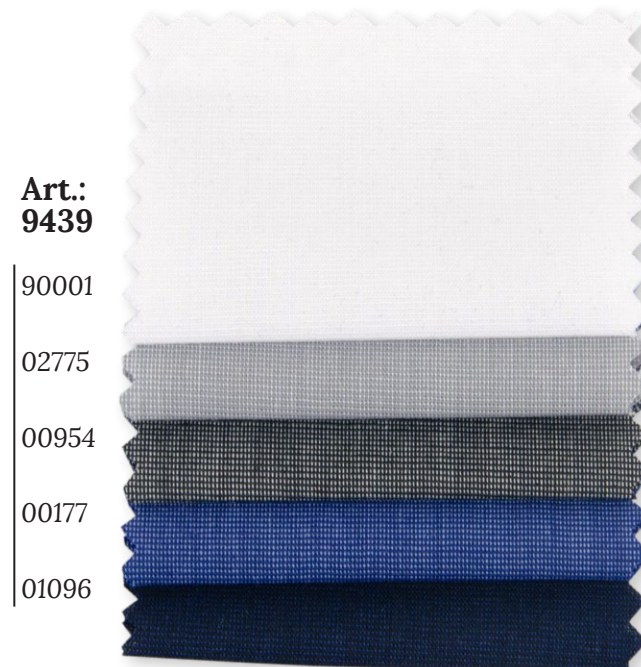
Art.:  
9065.72



# Get inspired



Get inspired with more fabrics from our standard collection, for instance our Cotton or Cotton blended fabrics. Cotton is a strong fibre, and is therefore a durable fabric to use in the corporate industry. Fabrics made with polyester are smooth, light and feel soft when wearing. A combination of these two fibres is a perfect match for a lot of segments in the corporate market.





**For more inspiration visit  
tootalshop.com**

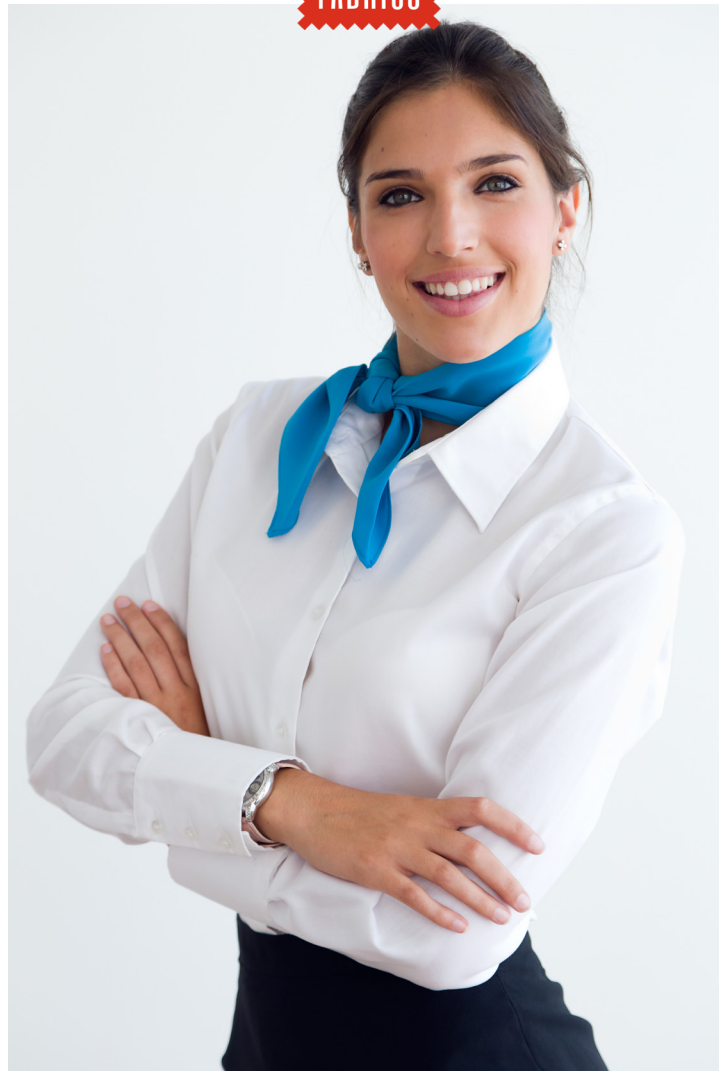


Tootal Fabrics (Holland) B.V. | Postbus 335 | 7500 AH Enschede  
IJzersteden 3 | 7547 TB Enschede | The Netherlands  
Tel. +31 53 428 6200 | [info@tootal.nl](mailto:info@tootal.nl) | [www.tootal.nl](http://www.tootal.nl)

*Your local partner...*

# TOTAL

FABRICS



*Your local partner...*